

Product: KLUDI ADLON BASIN MIXER DN15

Ref.: 5101045G4

Product description

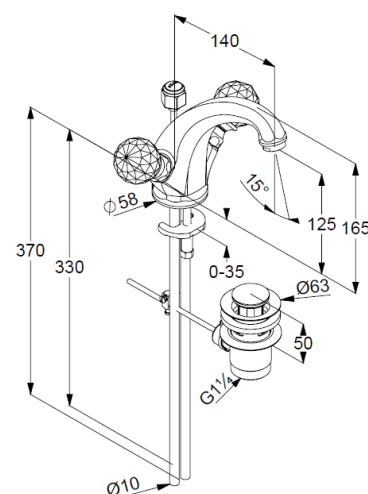
Basin mixer DN15
Cristall handle
Single hole mounted
Flow rate at 3 bar 13,5 l/ min.
Aerator M24
Ceramic headparts 180°
Pop up waste 1 1/4"
Rapid installation set
Copper tubes Ø 10 mm

Finishes:
45 gold plated 23 ct

Product picture



Dimensional drawing



Advertisement

Single hole mounted basin mixer DN15, manufacturer KLUDI GmbH & Co KG KLUDI ADLON item no. 5101045G5, finishes: 45 = gold plated 23 ct, type: basin mixer DN15/ PN10, ceramic headparts 180°, aerator M 24 x 1, copper tubes Ø 10 mm, pop up waste 1 1/4 inch, rod-pull and pull knob gold plated 23 ct, cristall handles, flow rate at 3 bar 13,5 l/ min., rapid installation set,

Flow rate diagram

