

Product: KLUDI THERMOSTAT concealed thermostatic mixer body, pre-installation set DN 15

Ref.: 35158

Product description

concealed thermostat mixer body DN 15
 pre-installation set
 without trim set
 in wall installation
 flow class B
 without shut-off valve
 back flow preventer
 dirt-catcher sieve
 noise group II
 P-IX 8410/II

Advertisement

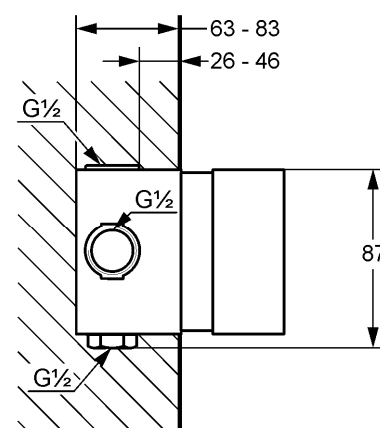
- * KLUDI GmbH & Co KG KLUDI concealed thermostat mixer body item no. 35158
- ** dirt-catcher sieve, thermostat control element, DIN EN 1111
- *** brass, DIN 50930-6

concealed thermostat mixer body, manufacturer KLUDI GmbH & Co KG KLUDI concealed thermostat mixer body item no. 35158, DN 15, body made of brass, for installation depth 63 - 83 mm, type: concealed-thermostat mixer body DN 15, flow class B B (max. 0,42 l / s), noise level DIN EN 4109 group II, report no. P- IX 8410 / II, without trim set, with dirt-catcher sieve, with back flow preventer DIN EN 1717, 2 connectors 1/2 inch, 2 outlets 1/2 inch, without shut-off valve, for pressure type water heater, for continuous line heater, PN 10,

Product picture



Dimensional drawing



Flow rate diagram

